

Table 5 Lifting capacity table (with main boom only)

Unit: ton

Outriggers fully extended to 8m, 34t counterweight, over side or rear working area														
Working radius (m)	Boom length (m)												Working radius (m)	
	13.2 ★	17.4	17.4	17.4	17.4	17.4 ★	21.6	21.6	21.6	21.6	21.6	21.6 ★		
3.0	100.0	40.5	66.0	72.0	72.0	72.0	29.5	44.0	65.0	68.0	68.0	68.0	3.0	
3.5	86.0	38.0	61.0	72.0	72.0	72.0	28.0	42.0	60.0	66.0	67.0	67.0	3.5	
4.0	80.0	36.0	56.5	71.0	71.0	71.0	26.0	40.0	55.0	65.0	66.0	66.0	4.0	
4.5	75.0	34.5	52.5	70.0	70.0	70.0	24.0	38.0	52.0	63.5	65.0	65.0	4.5	
5.0	70.0	33.0	49.0	65.0	66.0	66.0	23.0	36.0	49.0	60.0	63.0	63.0	5.0	
5.5	67.0	31.5	46.0	61.0	62.0	62.0	22.0	34.0	46.0	56.0	60.0	60.0	5.5	
6.0	61.0	30.0	43.0	57.5	59.0	59.0	21.0	31.5	43.0	53.0	57.0	57.0	6.0	
7.0	52.0	27.5	38.5	51.5	52.0	52.0	19.0	29.0	39.0	47.0	50.0	50.0	7.0	
8.0	45.0	25.5	35.0	45.5	45.5	45.0	17.0	26.5	36.0	44.0	44.5	44.5	8.0	
9.0	37.0	24.0	32.0	40.0	40.0	39.5	16.0	24.5	33.0	39.0	39.0	39.0	9.0	
10.0		22.5	29.5	36.0	36.0	35.5	15.0	22.5	30.0	36.0	35.5	35.0	10.0	
11.0		21.5	27.0	32.5	32.5	32.0	13.9	21.0	28.0	32.5	32.0	31.5	11.0	
12.0		20.3	25.5	29.5	29.5	29.0	13.0	19.5	26.0	31.0	30.0	29.0	12.0	
14.0							11.5	17.0	23.0	26.5	25.5	24.5	14.0	
16.0							10.4	15.0	20.5	21.0	20.5	19.5	16.0	
18.0													18.0	
20.0													20.0	
22.0													22.0	
24.0													24.0	
26.0													26.0	
28.0													28.0	
30.0													30.0	
32.0													32.0	
34.0													34.0	
36.0													36.0	
38.0													38.0	
40.0													40.0	
42.0													42.0	
44.0													44.0	
46.0													46.0	
48.0													48.0	
50.0													50.0	
Reeving	12	12					12						Reeving	
Hook	60t												Hook	
Telescoping mode	I	1	1	1	1	1	1	1	1	1	1	1	2	Telescoping mode
	II	1	1	1	1	1	2	1	1	1	1	2	2	
	III	1	1	1	1	2	1	1	1	1	2	2	1	
	IV	1	1	1	2	1	1	1	1	2	2	1	1	

Table 9 Lifting capacity table (with main boom only)

Unit: ton

Outriggers fully extended to 8m, 34 t counterweight, over side or rear working area														
Working radius (m)	Boom length (m)												Working radius (m)	
	51.0	51.0	51.0	51.0★	55.2	55.2	55.2★		59.4	59.4★	63.6★	70.0★		
5.0														5.0
5.5														5.5
6.0														6.0
7.0														7.0
8.0														8.0
9.0														9.0
10.0														10.0
11.0	13.5	15.5	18.0	20.0										11.0
12.0	13.0	14.5	17.0	19.5	13.0	14.0	15.5							12.0
14.0	11.3	13.0	15.5	17.5	11.5	13.0	14.5		11.0	12.0				14.0
16.0	10.0	11.5	13.8	15.4	10.5	12.0	13.5		10.5	11.5	9.5			16.0
18.0	9.0	10.4	12.4	13.6	9.5	11.0	12.5		9.6	11.0	9.2	7.0		18.0
20.0	8.0	9.3	11.0	12.2	8.5	9.8	11.2		9.0	10.2	9.0	7.0		20.0
22.0	7.2	8.4	10.0	11.0	7.8	9.0	10.2		8.2	9.3	8.4	6.8		22.0
24.0	6.5	7.6	9.0	9.8	7.0	8.2	9.3		7.5	8.5	7.8	6.5		24.0
26.0	6.0	6.9	8.1	8.9	6.4	7.6	8.4		6.9	7.8	7.2	6.2		26.0
28.0	5.5	6.3	7.4	8.0	5.9	6.9	7.6		6.4	7.1	6.6	5.9		28.0
30.0	5.0	5.7	6.8	7.3	5.4	6.3	6.8		5.9	6.6	6.1	5.6		30.0
32.0	4.5	5.2	6.2	6.3	5.0	5.8	6.2		5.5	6.1	5.6	5.2		32.0
34.0	4.2	4.8	5.7	5.5	4.6	5.3	5.6		5.1	5.5	5.2	4.8		34.0
36.0	3.9	4.4	5.2	4.7	4.2	4.9	5.0		4.7	5.1	4.8	4.4		36.0
38.0	3.6	4.0	4.7	4.1	3.9	4.5	4.4		4.4	4.6	4.4	4.1		38.0
40.0	3.3	3.7	4.1	3.5	3.6	4.2	3.8		3.9	4.1	4.0	3.8		40.0
42.0	3.1	3.4	3.6	3.0	3.3	3.9	3.2		3.7	3.5	3.7	3.5		42.0
44.0	2.9	3.2	3.1	2.5	3.1	3.4	2.8		3.5	3.1	3.4	3.2		44.0
46.0					2.8	3.0	2.3		3.2	2.7	3.0	2.9		46.0
48.0					2.6	2.6	2.0		2.8	2.3	2.7	2.6		48.0
50.0									2.5	2.0	2.3	2.3		50.0
52.0									2.2	1.7	2.0	2.0		52.0
54.0											1.7	1.7		54.0
56.0											1.4	1.5		56.0
58.0												1.2		58.0
60.0												1.0		60.0
Reeving	4				3					3		3		Reeving
Hook	60t												Hook	
mode ping	I	1	1	2	3	1	2	3		2	3	3	4	ping Telesco
	II	2	3	3	3	3	3	3		3	3	3	4	
	III	3	3	3	3	3	3	3		3	3	3	4	

2.5 Lifting height chart

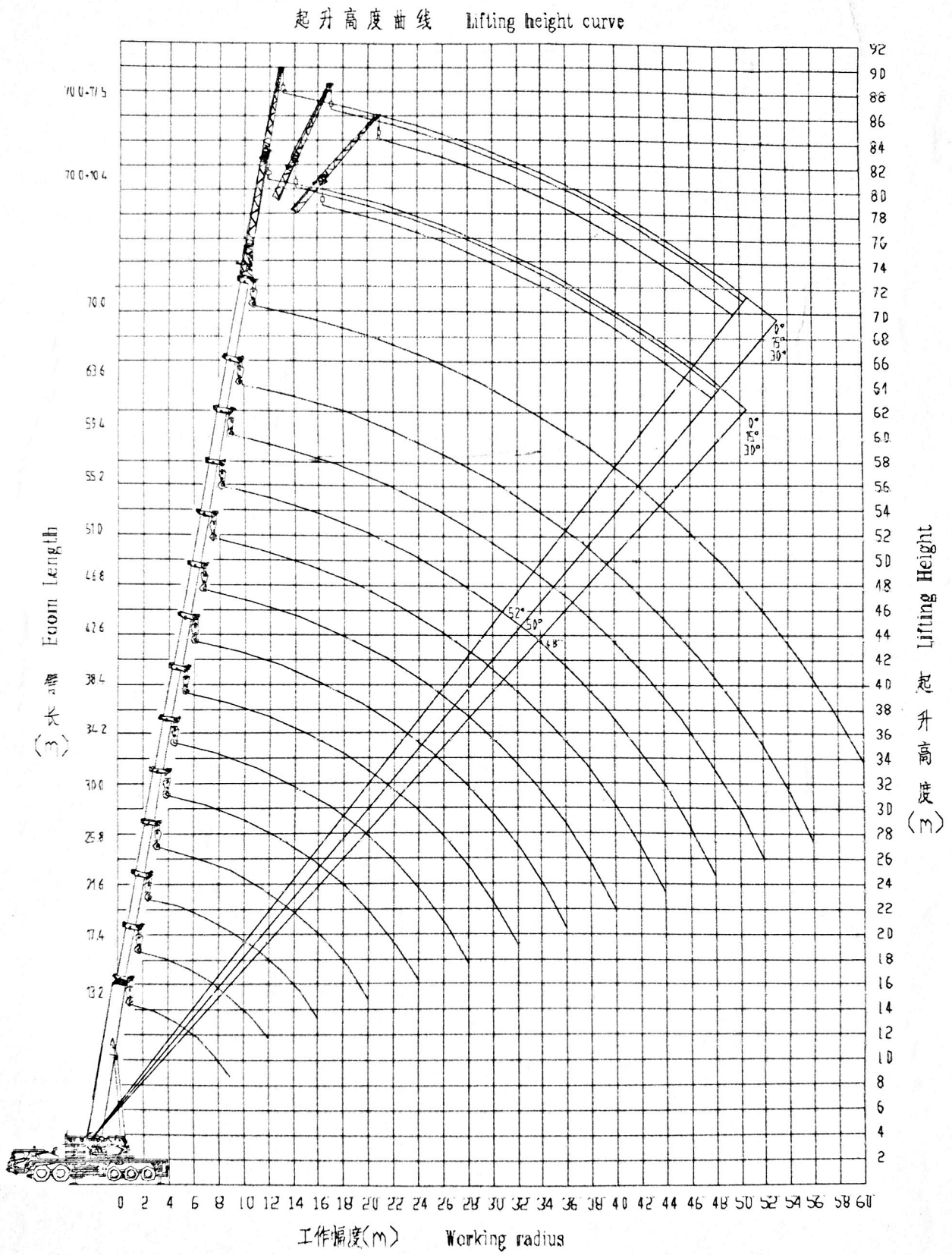


Figure 1-15 Lifting height chart for main boom (fully extended) + jib